

ARCHITECT ANTE VRBAN

Historic location dating from 1821.  
Today gets redefined to a new era of elegance and luxury.

Welcome to  
16 Custom Architect Ante Vrban residential interiors

for

BUSINESS RESIDENTIAL BUILDING ROVINJ

ARCHITECT ANTE VRBAN

for

S-II-1 APARTMENT

Total 137,38 m<sup>2</sup>

Parking 25,22 m<sup>2</sup>

**APARTMENT S-II-1  
+ PM 1  
137,38 m<sup>2</sup> + 25,22 m<sup>2</sup>  
- 1st floor**



STAN S-II-1 - 1.KAT					
BR.	OPIS PROSTORIJE	PODNA OBLOGA	KOEF.	PODNA POVRŠINA	NETTO POVRŠINA
1	HODNIK 1	parket	1,00	4,35 m <sup>2</sup>	4,35 m <sup>2</sup>
2	WC	pločice	1,00	1,96 m <sup>2</sup>	1,96 m <sup>2</sup>
3	DNEVNI BORAVAK I BLAGOVAONICA	parket	1,00	39,33 m <sup>2</sup>	39,33 m <sup>2</sup>
4	KUHINJA	parket	1,00	10,80 m <sup>2</sup>	10,80 m <sup>2</sup>
5	SPREMA	pločice	1,00	1,74 m <sup>2</sup>	1,74 m <sup>2</sup>
6	HODNIK 2	parket	1,00	3,13 m <sup>2</sup>	3,13 m <sup>2</sup>
7	SPAVAČA SOBA 1	parket	1,00	14,59 m <sup>2</sup>	14,59 m <sup>2</sup>
8	SPAVAČA SOBA 2	parket	1,00	11,79 m <sup>2</sup>	11,79 m <sup>2</sup>
9	KUPAONICA 1	pločice	1,00	4,86 m <sup>2</sup>	4,86 m <sup>2</sup>
10	SPAVAČA SOBA 3	parket	1,00	15,86 m <sup>2</sup>	15,86 m <sup>2</sup>
11	GARDEROBA	parket	1,00	6,53 m <sup>2</sup>	6,53 m <sup>2</sup>
12	KUPAONICA 2	pločice	1,00	8,32 m <sup>2</sup>	8,32 m <sup>2</sup>
13	LOGGIA	decking	0,75	18,82 m <sup>2</sup>	14,12 m <sup>2</sup>
STAN S-II-1 - 1.KAT				142,09 m <sup>2</sup>	137,38 m <sup>2</sup>
STAN S-II-1 - PM 1					25,22 m <sup>2</sup>









ARCHITECT ANTE VRBAN



ARCHITECT ANTE VRBAN



ARCHITECT ANTE VRBAN



ARCHITECT ANTE VRBAN



ARCHITECT ANTE VRBAN



ARCHITECT ANTE VRBAN



ARCHITECT ANTE VRBAN

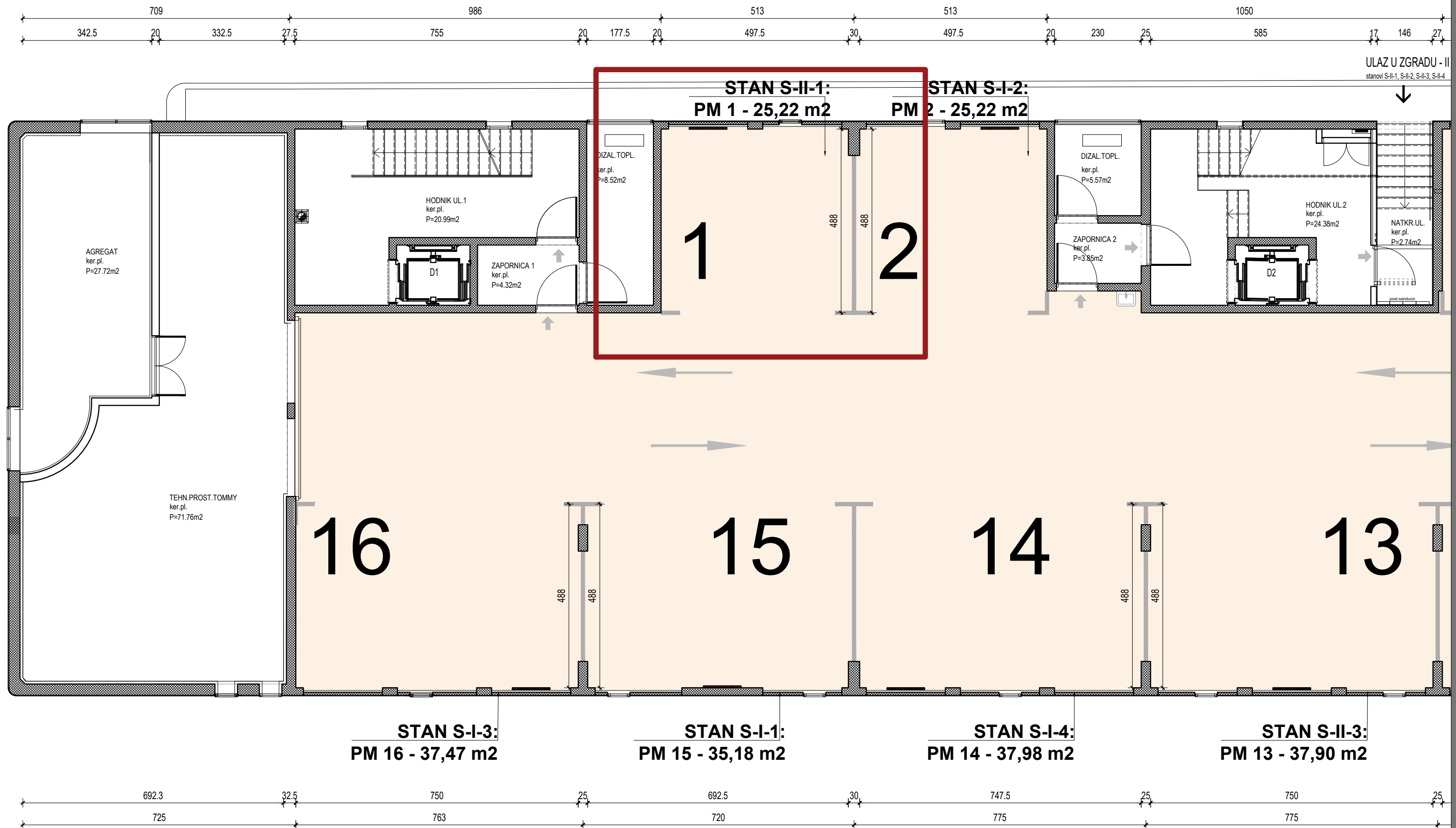


ARCHITECT ANTE VRBAN



ARCHITECT ANTE VRBAN

# GARAGE - PARKING SPACE (PM)



ULAZ U ZGRADU - II  
stanovi S-II-1, S-II-2, S-II-3, S-II-4



PM 3

PM 4

KA PA 773



PM 3

PM 4



# ARCHITECT ANTE VRBAN

16 Custom Architect Ante Vrban residential interiors

for

BUSINESS RESIDENTIAL BUILDING ROVINJ