

ARCHITECT ANTE VRBAN

Historic location dating from 1821.
Today gets redefined to a new era of elegance and luxury.

Welcome to
16 Custom Architect Ante Vrban residential interiors

for

BUSINESS RESIDENTIAL BUILDING ROVINJ

ARCHITECT ANTE VRBAN

for

S-I-1 APARTMENT

Total 127,06 m²

Parking 35,18 m²

APARTMENT S-I-1 + PM 15

127,06 m² + 35,18 m²
- 1st floor



STAN S-I-1 - 1.KAT					
BR.	OPIS PROSTORIJE	PODNA OBLOGA	KOEF.	PODNA POVRŠINA	NETTO POVRŠINA
1	HODNIK 1	parket	1,00	7,01 m ²	7,01 m ²
2	WC	pločice	1,00	1,64 m ²	1,64 m ²
3	DNEVNI BORAVAK I BLAGOVAONICA	parket	1,00	39,34 m ²	39,34 m ²
4	KUHINJA	parket	1,00	9,23 m ²	9,23 m ²
5	SPREMA	pločice	1,00	1,44 m ²	1,44 m ²
6	HODNIK 2	parket	1,00	1,86 m ²	1,86 m ²
7	SPAVAČA SOBA 1	parket	1,00	14,60 m ²	14,60 m ²
8	SPAVAČA SOBA 2	parket	1,00	10,46 m ²	10,46 m ²
9	KUPAONICA 1	pločice	1,00	4,48 m ²	4,48 m ²
10	SPAVAČA SOBA 3	parket	1,00	11,85 m ²	11,85 m ²
11	GARDEROBA	parket	1,00	4,98 m ²	4,98 m ²
12	KUPAONICA 2	pločice	1,00	7,51 m ²	7,51 m ²
13	LOGGIA	decking	0,75	16,86 m ²	12,65 m ²
STAN S-I-1 - 1.KAT				131,28 m ²	127,06 m ²
STAN S-I-1 - PM 15					35,18 m ²









ARCHITECT ANTE VRBAN



ARCHITECT ANTE VRBAN



ARCHITECT ANTE VRBAN



ARCHITECT ANTE VRBAN



ARCHITECT ANTE VRBAN



ARCHITECT ANTE VRBAN

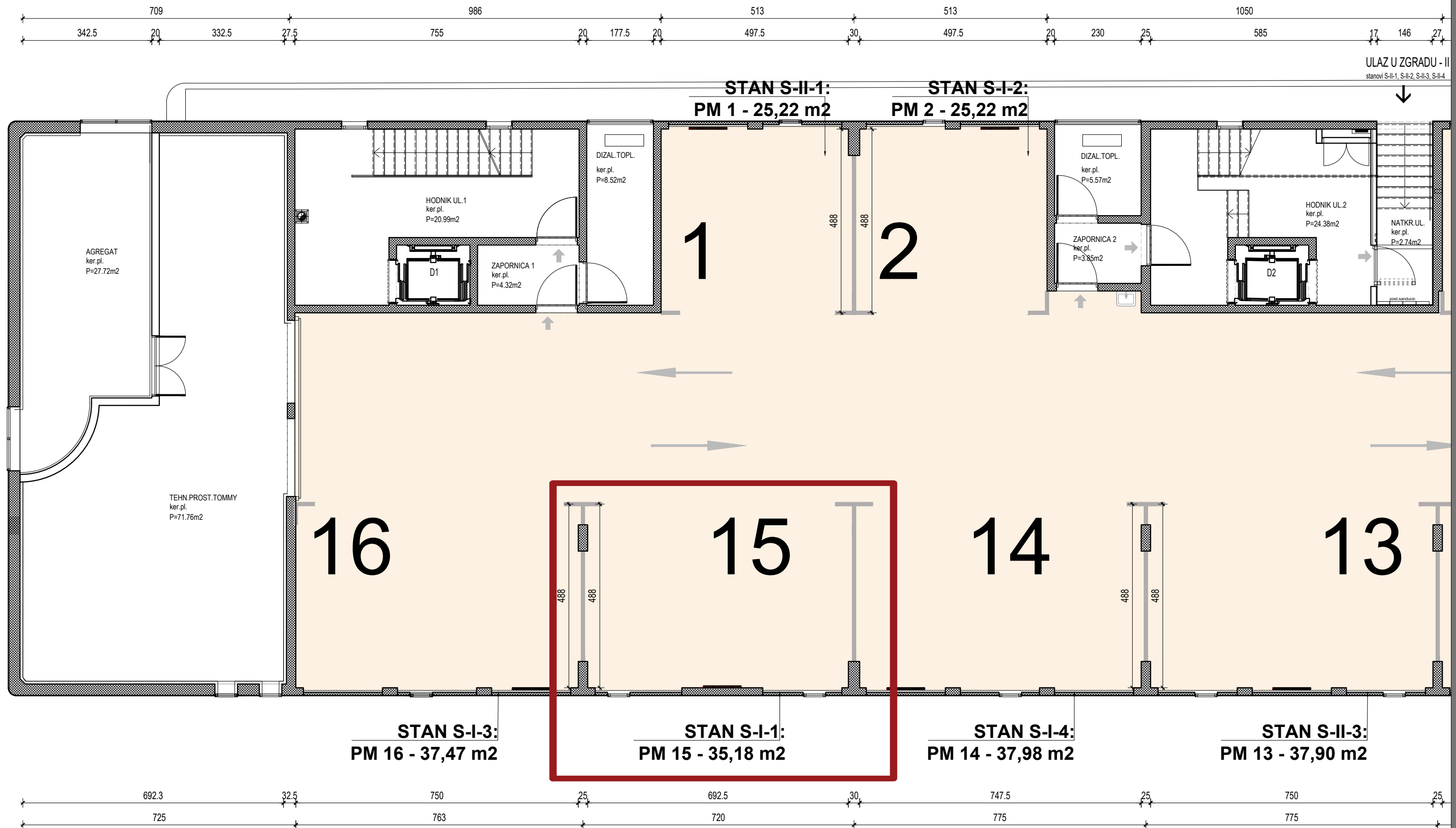


ARCHITECT ANTE VRBAN



ARCHITECT ANTE VRBAN

GARAGE - PARKING SPACE (PM)







PM 3

PM 4



ARCHITECT ANTE VRBAN

16 Custom Architect Ante Vrban residential interiors

for

BUSINESS RESIDENTIAL BUILDING ROVINJ