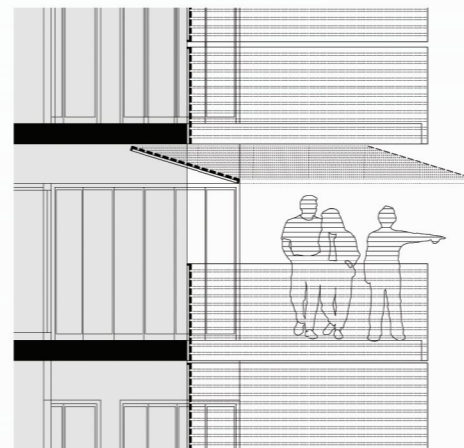
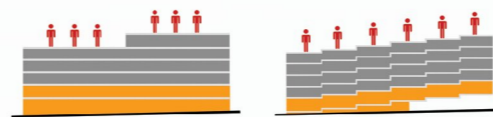




:: terasasta izgradnja

... visina zgrade određena je visinama vijenaca susjednih građevina (27,40m sa južne strane te 32,76m sa sjeverne), ali visine nisu kruto interpretirane (dio zgrade s južne P+4 i dio sa sjeverne strane P+5) nego je ta gradacija postignuta blagim vertikalnim pomacima ploha krova povezanih sa stanovima

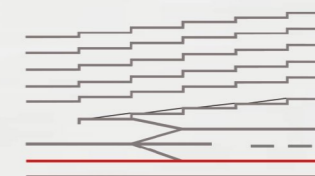


detalj brisoleja

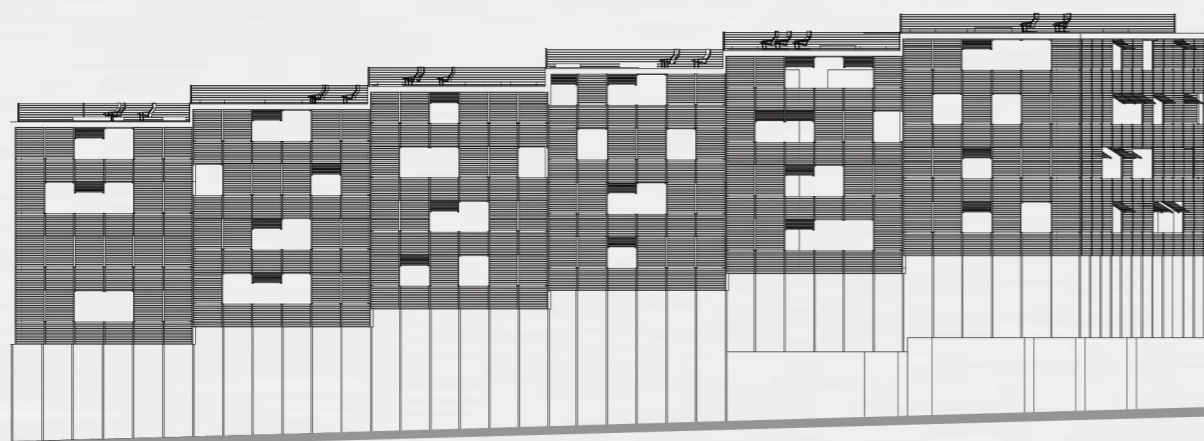
:: situacija - parcele:

28/F1, 28/F5

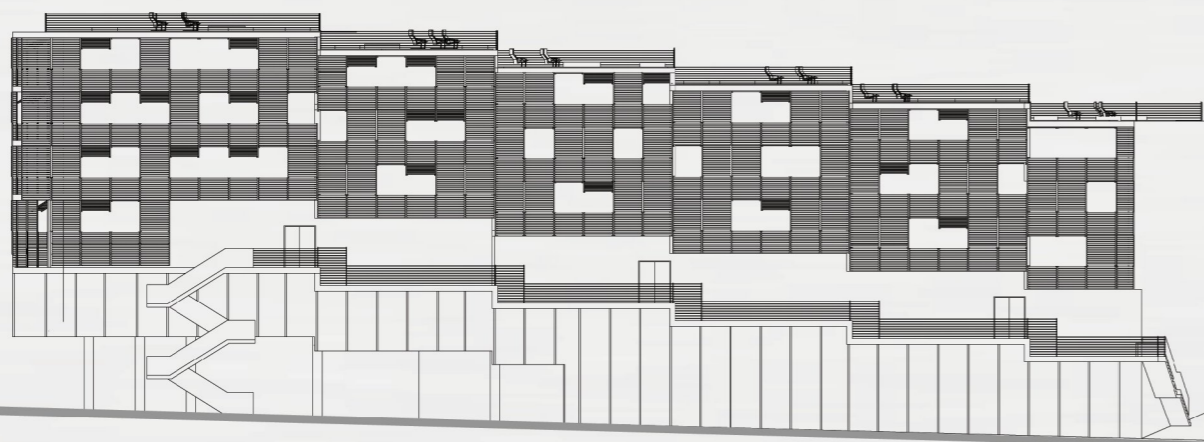
MJ 1:200



:: tlocrt podruma -1



:: istočno pročelje



:: zapadno pročelje

